



Scale inhibition

APPLICATION PROFILE

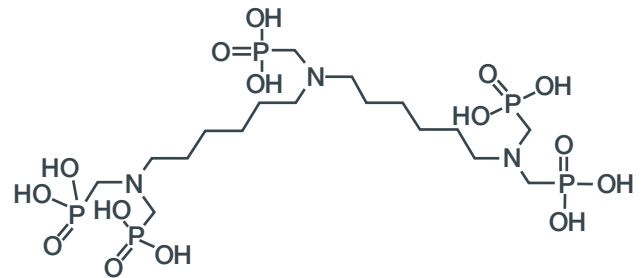


Ascend's FlexaTram™ amines, FlexaTrac™ acids and their derivatives provide excellent protection against common scales: calcium carbonate / calcite (CaCO_3), calcium sulfate from gypsum (CaSO_4), barium / barite (BaSO_4) and strontium sulfates / celestite (SrSO_4). Our technical experts can help you select the right product or customize solutions for your application. For more scale inhibition products, please see our oil and gas product portfolio.

FLEXATRAM-BHM AND DERIVATIVES

Phosphonates and salt

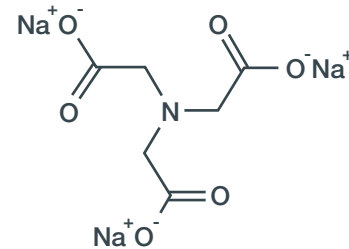
- Effective against calcium / magnesium carbonate and barium / strontium sulfate
- Effective at low pH (1-2)
- High calcium ion tolerance at a wide pH range and high temperatures (120°C)
- Typical dosage is 100-1000 ppm



FLEXATRAC-NTA-100 AND BLENDS

Aminopolycarboxylate

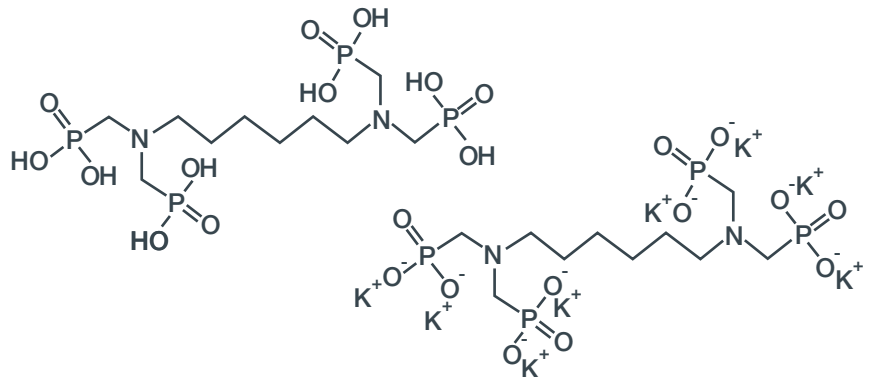
- Prevents iron sulfide scaling
- Iron / calcium chelation for water treatment
- Optimal performance in mid-to-low temperatures
- Dissolves iron when used in stoichiometric amounts
- Typical dosage is 100-1000 ppm



FLEXATRAM-DAM-700 AND DERIVATIVES

Phosphonates and salt

- Phosphoric acid version for calcium carbonate
- Potassium salt for calcium sulfate inhibition
- Effective at higher pH (6-8)
- Typical dosage is 100-1000 ppm



Although the information and recommendations set forth herein (hereinafter "Information") are presented in good faith and believed to be correct as of the date hereof, Ascend Performance Materials Operations LLC makes no representations or warranties as to the completeness or accuracy thereof. The full disclaimer of warranty and liability can be found at ascendmaterials.com/disclaimer.

©2017 Ascend Performance Materials Operations LLC. The Ascend Performance Materials, FlexaTrac, and FlexaTram marks and logos are trademarks or registered trademarks of Ascend Performance Materials Operations LLC. Rev. 03/2017