



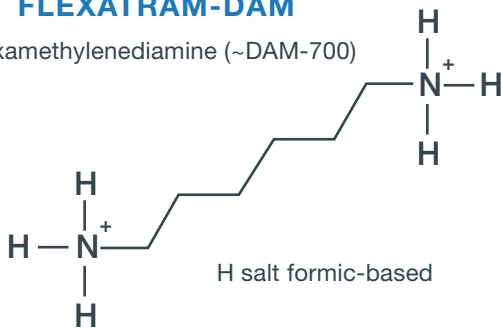
Clay stabilizers

APPLICATION PROFILE

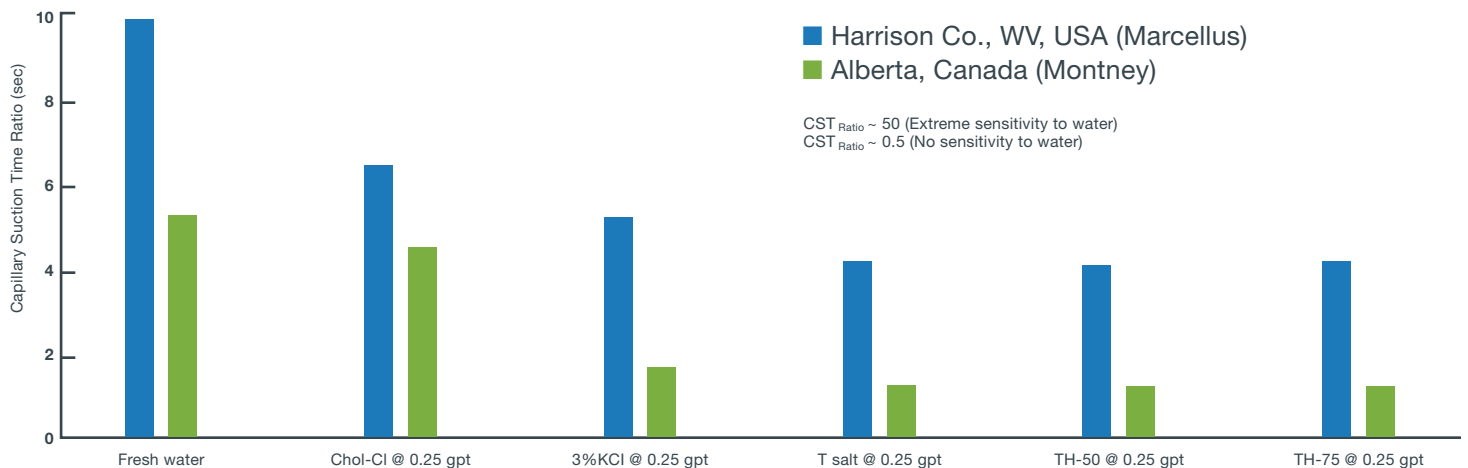
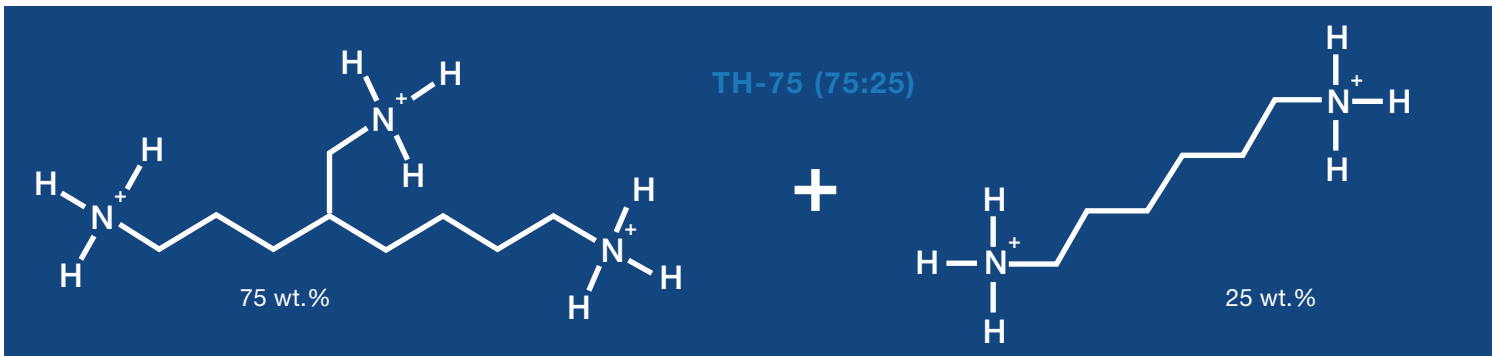
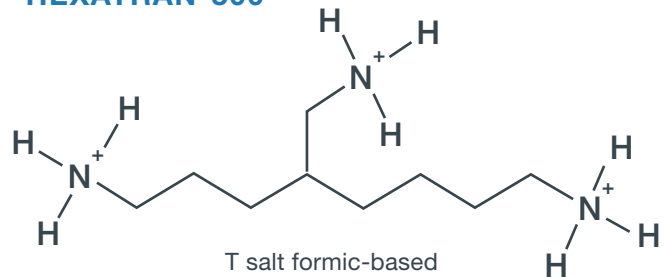
Salts from Ascend's proprietary products FlexaTram™-DAM and Hexatran™ are used as temporary clay stabilizers. FlexaTram-DAM and Hexatran outperform traditional clay control additives such as choline chloride (Chol-Cl) and potassium chloride (KCl). Our technical experts can help you select the right product or customize solutions for your application. For more clay stabilizer products, please see our oil and gas product portfolio.

FLEXATRAM-DAM

Hexamethylenediamine (~DAM-700)



HEXATRAN-300



Although the information and recommendations set forth herein (hereinafter "Information") are presented in good faith and believed to be correct as of the date hereof, Ascend Performance Materials Operations LLC makes no representations or warranties as to the completeness or accuracy thereof. The full disclaimer of warranty and liability can be found at ascendmaterials.com/disclaimer.

©2017 Ascend Performance Materials Operations LLC. The Ascend Performance Materials, FlexaTram and Hexatran marks and logos are trademarks or registered trademarks of Ascend Performance Materials Operations LLC. Rev. 03/2017